

**CCR5 Antibody(Center)**  
**Affinity Purified Rabbit Polyclonal Antibody (Pab)**  
**Catalog # AP19617C****Specification**

---

**CCR5 Antibody(Center) - Product Information**

Application	WB,E
Primary Accession	<a href="#">P51681</a>
Other Accession	<a href="#">NP_000570.1</a>
Reactivity	Human
Host	Rabbit
Clonality	Polyclonal
Isotype	Rabbit IgG
Calculated MW	40524
Antigen Region	151-177

**CCR5 Antibody(Center) - Additional Information****Gene ID** 1234**Other Names**

C-C chemokine receptor type 5, C-C CKR-5, CC-CKR-5, CCR-5, CCR5, CHEMR13, HIV-1 fusion coreceptor, CD195, CCR5, CMKBR5

**Target/Specificity**

This CCR5 antibody is generated from rabbits immunized with a KLH conjugated synthetic peptide between 151-177 amino acids from the Central region of human CCR5.

**Dilution**

WB~~1:1000

E~~Use at an assay dependent concentration.

**Format**

Purified polyclonal antibody supplied in PBS with 0.09% (W/V) sodium azide. This antibody is purified through a protein A column, followed by peptide affinity purification.

**Storage**

Maintain refrigerated at 2-8°C for up to 2 weeks. For long term storage store at -20°C in small aliquots to prevent freeze-thaw cycles.

**Precautions**

CCR5 Antibody(Center) is for research use only and not for use in diagnostic or therapeutic procedures.

**CCR5 Antibody(Center) - Protein Information****Name** CCR5 ([HGNC:1606](#))

**Synonyms** CMKBR5

**Function** Receptor for a number of inflammatory CC-chemokines including CCL3/MIP-1-alpha, CCL4/MIP-1-beta and RANTES and subsequently transduces a signal by increasing the intracellular calcium ion level. May play a role in the control of granulocytic lineage proliferation or differentiation. Participates in T-lymphocyte migration to the infection site by acting as a chemotactic receptor (PubMed:[30713770](#)).

**Cellular Location**

Cell membrane; Multi-pass membrane protein

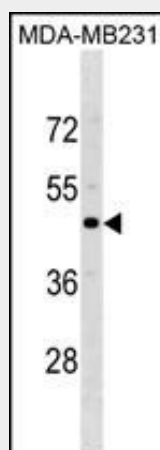
**Tissue Location**

Highly expressed in spleen, thymus, in the myeloid cell line THP-1, in the promyeloblastic cell line KG-1a and on CD4+ and CD8+ T-cells. Medium levels in peripheral blood leukocytes and in small intestine. Low levels in ovary and lung.

**CCR5 Antibody(Center) - Protocols**

Provided below are standard protocols that you may find useful for product applications.

- [Western Blot](#)
- [Blocking Peptides](#)
- [Dot Blot](#)
- [Immunohistochemistry](#)
- [Immunofluorescence](#)
- [Immunoprecipitation](#)
- [Flow Cytometry](#)
- [Cell Culture](#)

**CCR5 Antibody(Center) - Images**

CCR5 Antibody (Center) (Cat. #AP19617c) western blot analysis in MDA-MB231 cell line lysates (35ug/lane). This demonstrates the CCR5 antibody detected the CCR5 protein (arrow).

**CCR5 Antibody(Center) - Background**

This gene encodes a member of the beta chemokine receptor family, which is predicted to be a seven transmembrane protein similar to G protein-coupled receptors. This protein is expressed by T cells and macrophages, and is known to be an important

co-receptor for macrophage-tropic virus, including HIV, to enter host cells. Defective alleles of this gene have been associated with the HIV infection resistance. The ligands of this receptor include monocyte chemoattractant protein 2 (MCP-2), macrophage inflammatory protein 1 alpha (MIP-1 alpha), macrophage inflammatory protein 1 beta (MIP-1 beta) and regulated on activation normal T expressed and secreted protein (RANTES). Expression of this gene was also detected in a promyeloblastic cell line, suggesting that this protein may play a role in granulocyte lineage proliferation and differentiation. This gene is located at the chemokine receptor gene cluster region. Two transcript variants encoding the same protein have been found for this gene.

#### **CCR5 Antibody(Center) - References**

Gerard, H.C., et al. Am. J. Med. Sci. 340(6):448-451(2010)  
Hammad, M.M., et al. J. Biol. Chem. 285(45):34653-34664(2010)  
Martens, H.A., et al. J. Rheumatol. 37(11):2226-2231(2010)  
Weng, C.J., et al. Oral Oncol. 46(10):767-772(2010)  
Mamtani, M., et al. PLoS ONE 5 (7), E11458 (2010) :